



Individual contact M10, complete AR66DA

Approved for Rails SBB1-6

Item number: AR66DA

Net weight: 0.0959 kg

Packing unit: 30

Article Description

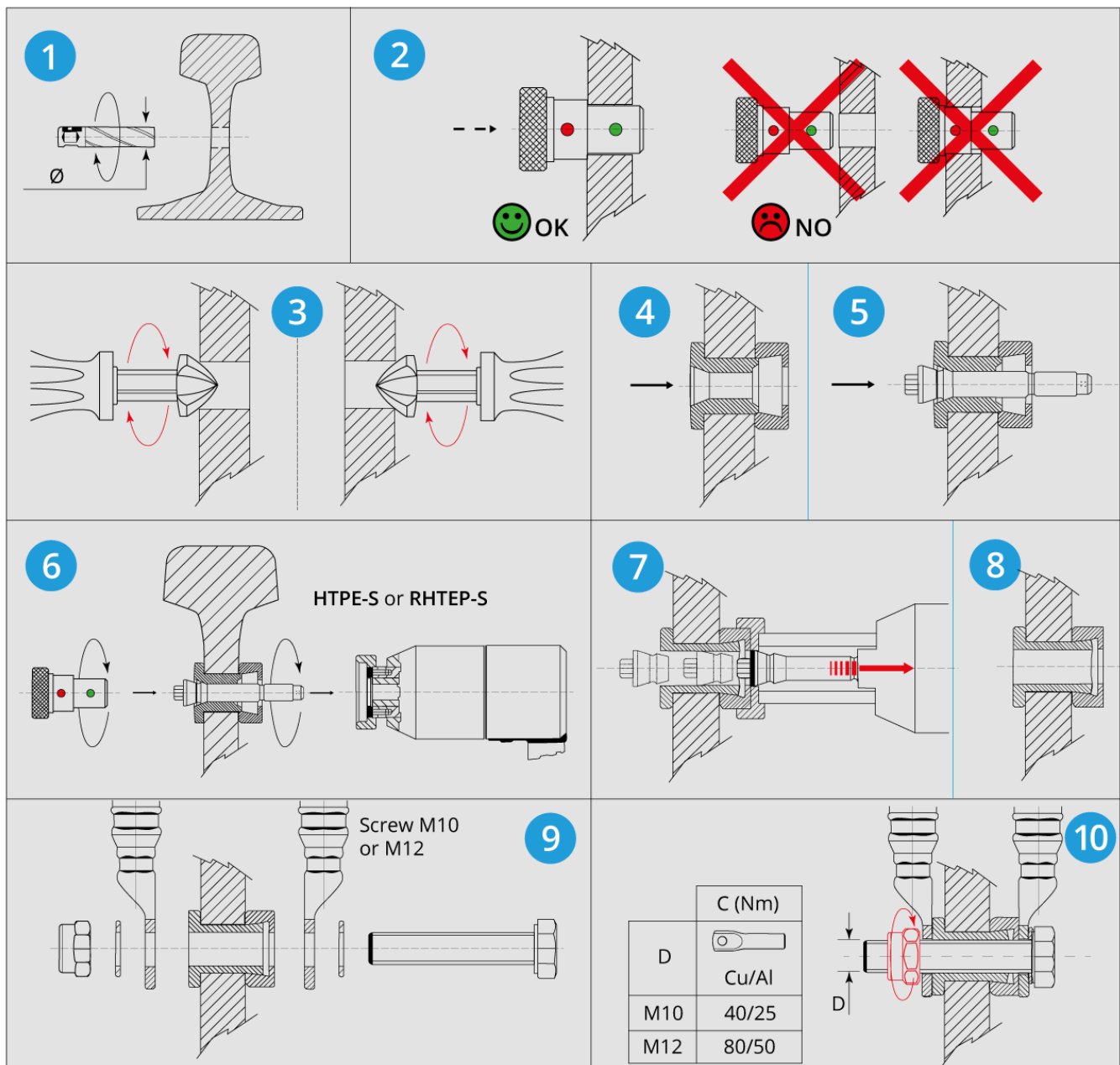
A rail connection with our system consists of four parts:

- Rivet bush M10 from tin-plated copper
- Hexagon screw M10 A4, stainless steel (single contact with spacer disc)
- Washer from stainless steel
- Hexagon nut M10 self-locking from stainless steel A2

Technical characteristics

Borehole (mm): 13.5

Screw length (mm): 42



Information on mounting the AR contacts

- After drilling, the copper bush must be evenly pressed to avoid the occurrence of corrosion.
- The electrical connection can take place at a later point in time.
- The self-locking nut must be tightened to 80 Nm with copper cable lugs for M12 and to 50 Nm with aluminium cable lugs.
- Copper cable lugs for M10 must be tightened to 40 Nm, and aluminium cable lugs to 25 Nm.



Complementary products:

Tools:



B500-TEPF

Cordless hydraulic crimping tool B500-TEPF



HTEP

Hydraulic crimp HTEP

Accessories:



CAL135.145

Test gauge for rail contacts M10



OG13.2

Plunger for rail contacts with screws M12